

Welcome to the Magellan Family/Member Intensive Behavioral Health Services (IBHS) Forum

MARCH 5, 2020

Magellan
HEALTHCARESM

The slide features a light blue background with a white horizontal band across the middle. Several triangles in blue, purple, and magenta are scattered around the edges of the slide, some partially cut off by the frame.

Welcome and Opening Remarks

Agenda



- What is Intensive Behavioral Health Services (IBHS)?
- Key Changes in IBHS
- IBHS Authorization Process
- Key Takeaways
- Ongoing Resources
- Questions



What is IBHS?



- Intensive Behavioral Health Services were created when a diverse stakeholder group came together to talk about regulating BHRS. Stakeholders included family members, providers, and other parties involved in making BHRS work.
- In these discussions the stakeholder group determined a new name (IBHS) would be best to move the services forward.
- Applies to BHRS, ABA, Evidence Based Programs (Multi-Systemic Treatment (MST), Functional Family Therapy (FFT) etc.), CRR Host Home and group activities (Summer Therapeutic Activities Program (STAP), Therapeutic After School Program (TASP))

IBHS has 3 main categories:



Individual

- Behavior Consultation (BC)
- Mobile Therapy (MT)
- Behavior Technician (BT)
- Evidence Based Therapy (FFT & MST)

Group

- Therapeutic Afterschool Program (TASP)
- Summer Therapeutic Activities Program (STAP)
- ABA group services

ABA

- Behavior Analytic
- Behavior Consultation ABA
- Assistant BC -ABA
 - BHT-ABA

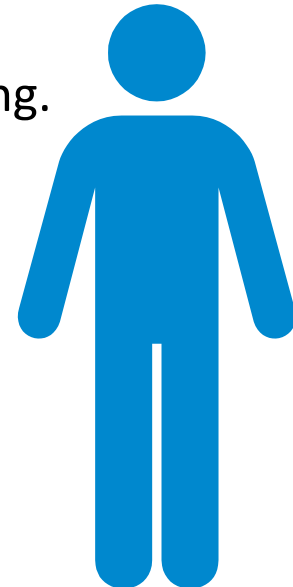
- Providers will write in their Program Descriptions which of these categories their agency plans to deliver.

Individual Services



Intensive therapeutic interventions and supports that:

- reduce and manage identified therapeutic needs
- increase coping strategies
- support skill development to promote positive behaviors
- and stabilize, maintain or maximize functioning of a child, youth or young adult
- provided in the home, school or other community setting.

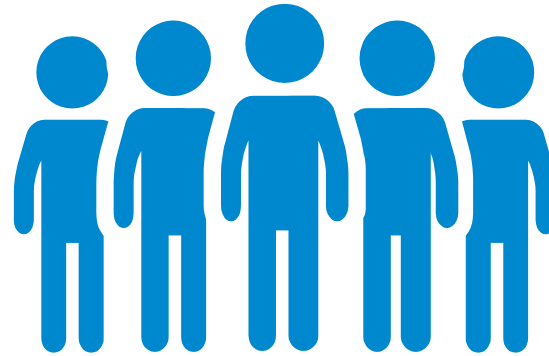


Group Services



Group services are therapeutic interventions provided primarily in a group format through clinical interventions including psychotherapy and ABA services, structured activities and community integration activities that address a child's, youth's or young adult's identified treatment needs. Group services may be provided in a school, community setting or community like setting. A community like setting is a setting that simulates a natural or normal setting for a child, youth or young adult.

- Delivered by graduate-level professional or individual qualified to provide BHT or BHT-ABA services





ABA is the design, implementation and evaluation of environmental modifications, using behavioral stimuli and consequences, to produce socially significant improvement in human behavior or to prevent loss of attained skill or function, including the use of direct observation, measurement and functional analysis of the relations between the environment and behavior.

ABA is used to develop needed skills (behavioral, social, communicative, and adaptive functioning) through the use of reinforcement, prompting, task analysis, or other appropriate interventions in order for a child, youth or young adult to master each step necessary to achieve a targeted behavior.



The slide features a light purple horizontal band across the middle. Several triangles in blue, purple, and magenta are scattered around the edges of the slide, some overlapping the purple band and others on the white background.

Key Changes with IBHS

Key Changes with IBHS



- Agencies that provide IBHS must obtain an IBHS license.
- Changes to supervision qualifications.
- Changes to training qualifications.
- Interagency Service Planning Team (ISPT) meeting is no longer required in the regulations.
- Services require a written order and assessment. Will no longer require a Life Domain evaluation.
- ABA no longer requires an Autism Spectrum Disorder diagnosis.
- Providers are required to have a list of community resources for families upon request.
- The ability to do physical management has been added with specific criteria around it. This is not a requirement however for all IBHS providers.

Magellan has the right to enforce additional requirements.

The slide features a light blue background with a white horizontal band across the middle. Several triangles in blue, purple, and magenta are scattered around the edges of the slide. The text "How do I get IBHS?" is centered in the white band, underlined.

How do I get IBHS?



A Written Order



❖ Written by:

- A licensed physician
 - A licensed psychologist
 - A certified registered nurse practitioner
 - Other licensed practitioner whose scope of practice includes diagnosis and treatment of behavioral health disorders and the prescribing of behavioral health services, including IBHS
 - These practitioners need to be enrolled with the state.
- ## ❖ Based on a face-to-face interaction with child/youth/young adult
- ## ❖ Written within 12 months/1yr prior to the start of IBHS.
- ## ❖ A psychiatric or psychological evaluation can be used in place of a written order provided the evaluation includes the information that must be in the written order.



A Written Order Contains...



- ✓ Behavioral Health Diagnosis
- ✓ Clinical information to support medical necessity of the service ordered
- ✓ Maximum number of hours of each service per month using “up to” language.
- ✓ Setting where services may be provided
- ✓ Measurable improvements in identified therapeutic needs that indicate when services may be reduced, changed or terminated



Face-to-Face Assessment



- Completed by an individual who meets qualifications to provide Behavior Consultation (BC) or Mobile Therapy (MT) services
- Completed within 15 days or 30 days for ABA
- Magellan expects these to be reviewed and updated at least every 6 months
- Assessments should occur in the home/school/community as needed for Individual and ABA Services
- Assessments for Group Services may be office based

Assessment shall include the following:

- –Strengths and needs across developmental and behavioral domains
- –Strengths and needs of family system
- –Natural supports
- –Specific services needed to support the child's needs
- –Specific services needed to support parent/caregiver needs

Face-to-Face Assessment continued



Clinical information including:

- –Treatment history
- –Medical history
- –Developmental history
- –Family structure and history
- –Educational history
- –Social history
- –Trauma history
- –Developmental, Cognitive, Communicative, Social and Behavioral functioning
- –other relevant clinical information
- –Cultural, language or communication needs
- –Summary of treatment recommendations

Individualized Treatment Plan for Individual, Group and ABA Services

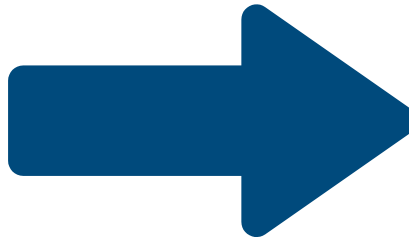


- Developed within 30 days (45 for ABA) of the initiation of services
- Reviewed and updated at least every 6 months
- Strength based and developed collaboratively with child and caregiver
- Must include the following:
 - Service type, setting and hours
 - How parent/guardian participation is needed
 - Safety plan
 - Specific goals, objectives, and interventions to address therapeutic needs
 - Timeframes





**Current authorizations for BHRS/ABA
will continue until the last covered
day of the authorization.**

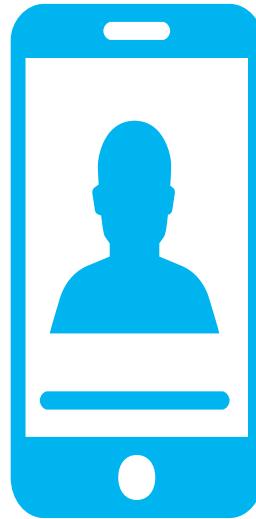




We do not want families to experience a disruption in services while IBHS is rolled out.



Magellan Updates



- All BHRS/ABA contracted agencies to accept calls from new families seeking BHRS/IBHS for evaluation/assessment/written order process regardless of ability to staff the prescribed services.
- Providers should continue to prescribe BHRS until the network is able to accommodate request for IBHS



- ISPTM's will no longer be required for authorization or re-authorization for BHRS/IBHS with the exceptions below:
 - When RBT or BHT is requested in the school/daycare/preschool setting. The meeting summary is required for the authorization packet.
- Magellan will require that ISPTM's be held for the following reasons:
 - Annual ISPT meeting's should be held.
 - When a referral to a higher level of care is being considered.
 - When Acute Inpatient services or Crisis Services have been utilized
 - When requested by family member or team member.
 - A Magellan representative should be included for any ISPT meetings intended for RTF referral or by family member request.



Key Takeaways



- BHRS will continue to be prescribed until the IBHS network is developed.
- New staffing requirements may impact current teams.
- The Magellan online provider search and provider directory will be updated to include IBHS agencies.
- Families should outreach their current providers or Magellan directly if they experience any barriers with accessing services.
- BHRS will officially end 1/17/2021 and all services will have to transition to IBHS by that date



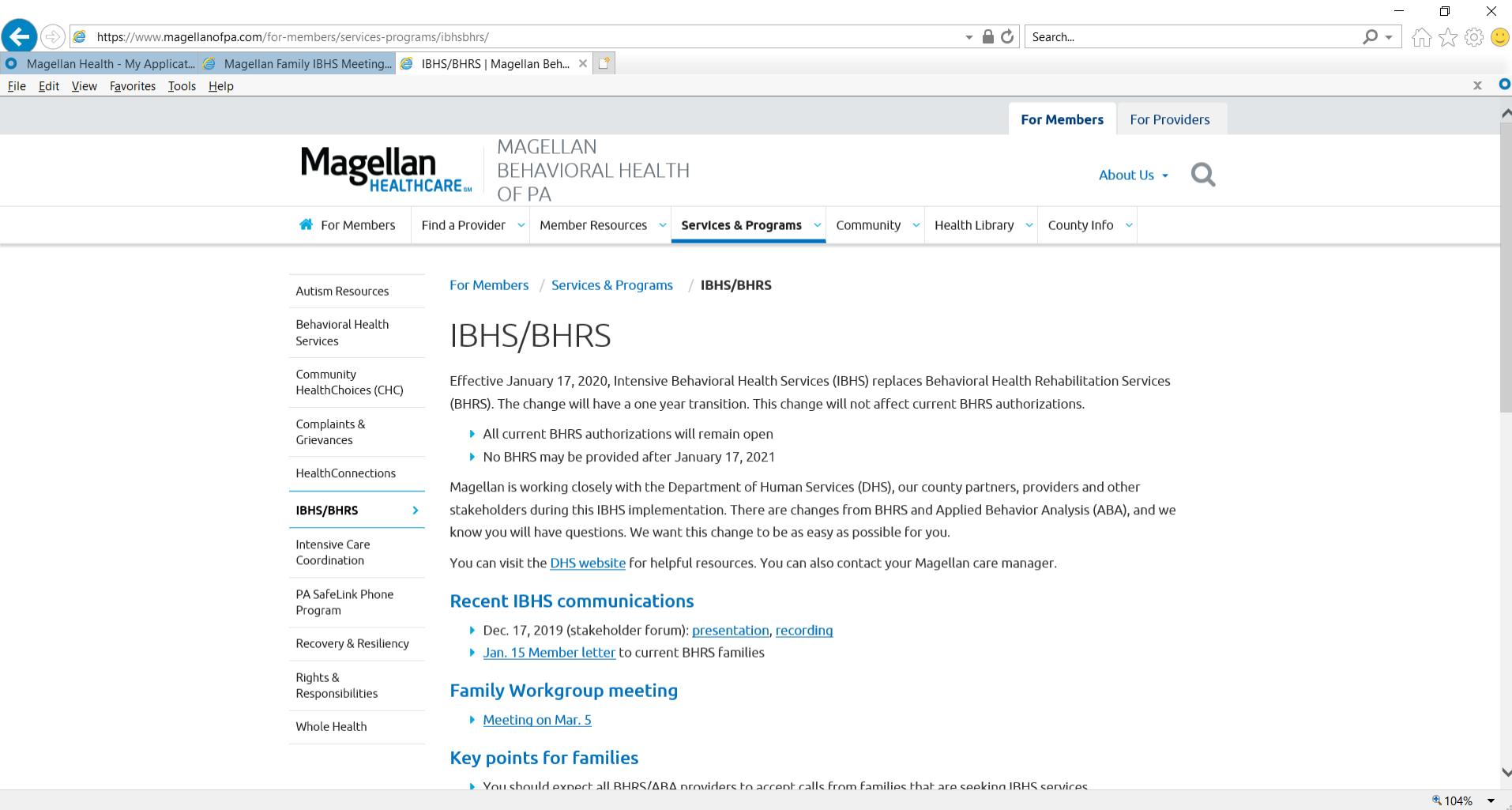
Ongoing Resources for IBHS



If you have a current BHRIS/ABA authorization for services, please outreach the office staff (case managers, supervisors) from your provider to ask questions and discuss any concerns.



Magellan IBHS family resource page: <https://www.magellanoftpa.com/for-programs/ibhsbhers/>



The screenshot shows a web browser window with the URL <https://www.magellanoftpa.com/for-members/services-programs/ibhsbhers/>. The browser's address bar and tabs are visible at the top. The website header includes the Magellan Healthcare logo and navigation links for "For Members" and "For Providers". A search bar is located on the right side of the header. Below the header, a horizontal navigation menu contains links for "For Members", "Find a Provider", "Member Resources", "Services & Programs" (which is highlighted), "Community", "Health Library", and "County Info". The main content area features a left sidebar with a list of resources: "Autism Resources", "Behavioral Health Services", "Community HealthChoices (CHC)", "Complaints & Grievances", "HealthConnections", "IBHS/BHRS" (highlighted with a right-pointing arrow), "Intensive Care Coordination", "PA SafeLink Phone Program", "Recovery & Resiliency", "Rights & Responsibilities", and "Whole Health". The main content area displays the title "IBHS/BHRS" and a paragraph explaining the transition from Behavioral Health Rehabilitation Services (BHRS) to Intensive Behavioral Health Services (IBHS) effective January 17, 2020. It lists two key points: "All current BHRS authorizations will remain open" and "No BHRS may be provided after January 17, 2021". Below this, it states that Magellan is working closely with the Department of Human Services (DHS) and other stakeholders during the implementation. A link to the "DHS website" is provided for helpful resources. A section titled "Recent IBHS communications" lists two items: "Dec. 17, 2019 (stakeholder forum): presentation, recording" and "Jan. 15 Member letter" to current BHRS families. A section titled "Family Workgroup meeting" lists "Meeting on Mar. 5". A section titled "Key points for families" lists "You should expect all BHRS/ABA providers to accept calls from families that are seeking IBHS services". The browser's status bar at the bottom right shows a zoom level of 104%.

Magellan HEALTHCARE™

MAGELLAN BEHAVIORAL HEALTH OF PA

About Us

For Members For Providers

For Members Find a Provider Member Resources **Services & Programs** Community Health Library County Info

Autism Resources

Behavioral Health Services

Community HealthChoices (CHC)

Complaints & Grievances

HealthConnections

IBHS/BHRS

Intensive Care Coordination

PA SafeLink Phone Program

Recovery & Resiliency

Rights & Responsibilities

Whole Health

[For Members](#) / [Services & Programs](#) / [IBHS/BHRS](#)

IBHS/BHRS

Effective January 17, 2020, Intensive Behavioral Health Services (IBHS) replaces Behavioral Health Rehabilitation Services (BHRS). The change will have a one year transition. This change will not affect current BHRS authorizations.

- ▶ All current BHRS authorizations will remain open
- ▶ No BHRS may be provided after January 17, 2021

Magellan is working closely with the Department of Human Services (DHS), our county partners, providers and other stakeholders during this IBHS implementation. There are changes from BHRS and Applied Behavior Analysis (ABA), and we know you will have questions. We want this change to be as easy as possible for you.

You can visit the [DHS website](#) for helpful resources. You can also contact your Magellan care manager.

Recent IBHS communications

- ▶ Dec. 17, 2019 (stakeholder forum): [presentation](#), [recording](#)
- ▶ [Jan. 15 Member letter](#) to current BHRS families

Family Workgroup meeting

- ▶ [Meeting on Mar. 5](#)

Key points for families

- ▶ You should expect all BHRS/ABA providers to accept calls from families that are seeking IBHS services

PA HealthChoices IBHS webpage:

<http://www.healthchoices.pa.gov/providers/about/behavioral/inbehavioralhs/index.htm>



The screenshot shows a web browser window displaying the Pennsylvania Department of Human Services' HealthChoices Provider Resources page for Intensive Behavioral Health Services (IBHS). The browser's address bar shows the URL: <http://www.healthchoices.pa.gov/providers/about/behavioral/inbehavioralhs/index.htm>. The page features a header with the Pennsylvania Department of Human Services logo and navigation links for About, Resources, and Contact. A large banner image shows a smiling male doctor with a stethoscope. Overlaid on the banner is the HealthChoices logo and the text "PROVIDER RESOURCES". Below the banner is a navigation bar with links for Home, Provider Resources, About, Behavioral HealthChoices, and Intensive Behavioral Health Services. Social media links for Facebook, Twitter, and YouTube are also present. The main content area is titled "Intensive Behavioral Health Services" and contains a paragraph describing IBHS services. A "Related Topics" box on the right indicates that no related topics were found. At the bottom, there is a link to "Annex A: Intensive Behavioral Health Services Regulations".

HealthChoices
Pennsylvania Department of Human Services
PROVIDER RESOURCES

Intensive Behavioral Health Services

Intensive Behavioral Health Services (IBHS) support children, youth, and young adults with mental, emotional, and behavioral health needs. IBHS offers a wide array of services that meet the needs of these individuals in their homes, schools, and communities. IBHS has three categories of service: 1) Individual services which provide services to one child; 2) Applied Behavior Analysis (ABA) which is a specific behavioral approach to services; and 3) Group services which are most often provided to multiple children at a specific place. Evidence-based treatment (EBT) can be delivered through individual services, ABA services, and group services.

Related Topics

No related topics were found.

Annex A: Intensive Behavioral Health Services Regulations

Magellan's provider search: magellanoftpa.com



Browser address bar: <https://www.magellanoftpa.com/for-members/find-a-provider/provider-search-start/provider-search/?county=Lehigh>

Browser tabs: Magellan Health - My Applicat..., Magellan Family IBHS Meeting..., MagNET, MH_Template_Standard.pptx | ..., Provider Search | Magellan ...

Navigation: For Members | For Providers

Magellan HEALTHCARE MAGELLAN BEHAVIORAL HEALTH OF PA About Us

For Members Find a Provider Member Resources Services & Programs Community Health Library County Info

About Providers
Prepare for your Appointment
Provider Directories
Provider Search

For Members / Find a Provider / Provider Search Start / **Provider Search**

Provider Search

Location Provider Info Fields marked with an asterisk * are required.

Choose a Provider List: *
--Choose One--

Search By: ☒ ZipCode ☐ Address ☐ State/County

Zip Code: * Distance: *
5 Miles

SEARCH

Please call Magellan's member line for any concerns getting into services or maintaining current services.



Member services contact information

Bucks: (877) 769-9784

Cambria: (800) 424-0485

Delaware: (888) 207-2911

Lehigh: (866) 238-2311

Montgomery: (877) 769-9782

Northampton: (866) 238-2312

TTY (All counties): PA Relay 7-1-1



Questions?



Thank you!



This presentation may include material non-public information about Magellan Health, Inc. (“Magellan” or the “Company”). By receipt of this presentation each recipient acknowledges that it is aware that the United States securities laws prohibit any person or entity in possession of material non-public information about a company or its affiliates from purchasing or selling securities of such company or from the communication of such information to any other person under circumstance in which it is reasonably foreseeable that such person may purchase or sell such securities with the benefit of such information.

The information presented in this presentation is confidential and expected to be used for the sole purpose of considering the purchase of Magellan services. By receipt of this presentation, each recipient agrees that the information contained herein will be kept confidential. The attached material shall not be photocopied, reproduced, distributed to or disclosed to others at any time without the prior written consent of the Company.

Confidentiality statement



By receipt of this presentation, each recipient agrees that the information contained herein will be kept confidential and that the information will not be photocopied, reproduced, or distributed to or disclosed to others at any time without the prior written consent of Magellan Health, Inc.

The information contained in this presentation is intended for educational purposes only and is not intended to define a standard of care or exclusive course of treatment, nor be a substitute for treatment.

**If the presentation includes legal information (e.g., an explanation of parity or HIPAA), add this: The information contained in this presentation is intended for educational purposes only and should not be considered legal advice. Recipients are encouraged to obtain legal guidance from their own legal advisors.*

Confidentiality statement



The information presented in this presentation is confidential and expected to be used solely in support of the delivery of services to Magellan members. By receipt of this presentation, each recipient agrees that the information contained herein will be kept confidential and that the information will not be photocopied, reproduced, or distributed to or disclosed to others at any time without the prior written consent of Magellan Health, Inc.

**If the presentation includes legal information (e.g., an explanation of parity or HIPAA), add this: The information contained in this presentation is intended for educational purposes only and should not be considered legal advice. Recipients are encouraged to obtain legal guidance from their own legal advisors.*